

## MAYFAIR PRIVATE MEMBERS CLUB

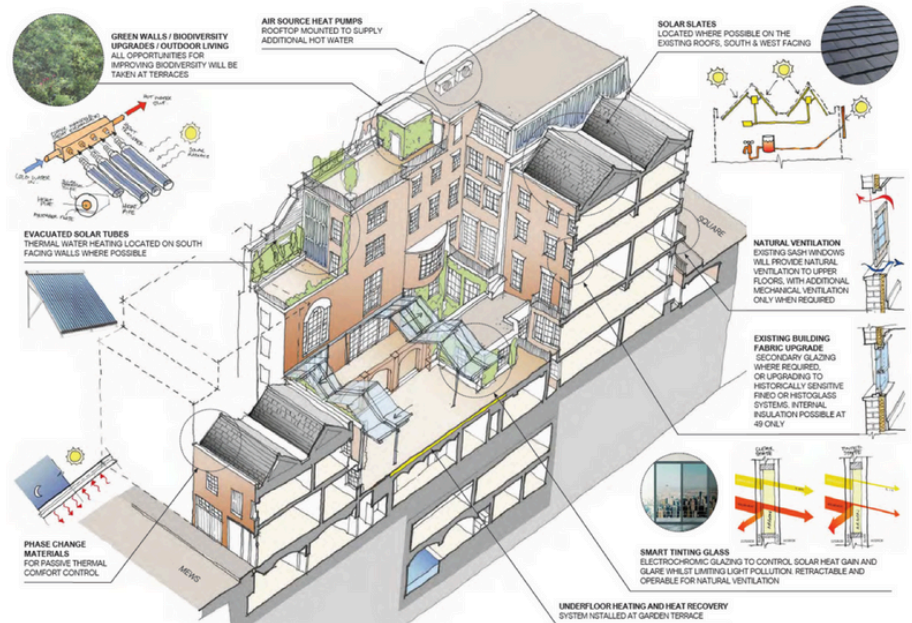
In a recent design project we took a Grade II listed private members club in the heart of Mayfair through a comprehensive approach that extended beyond the specific requirements of the planning processes, BREEAM, Part L, and other targeted certifications.

We have achieved sustainable outcomes that address the broader context of environmental, social and economic sustainability, developing 8 sustainability themes and 57 specific objectives, each with measurable key performance indicators.



## KEY PERFORMANCE INDICATORS

These ranged from net-zero operations, promotion of social value and low-carbon transport, supporting biodiversity and climate resilience, minimising waste and fostering a circular economy.



“WE WERE INITIALLY DRAWN TO HESS DUE TO THEIR UNRIVALLED EXPERTISE IN FOODSERVICE, BUT WE WERE EQUALLY IMPRESSED WITH THEIR KNOWLEDGE OUTSIDE OF KITCHEN AND LEISURE FACILITIES. THIS PROJECT HAD SIGNIFICANT HERITAGE CONSTRAINTS BUT TOGETHER WE’VE MANAGED TO MAKE SUBSTANTIAL IMPROVEMENTS IN THE FABRIC AND SYSTEMS OF THIS COMPLEX DEVELOPMENT, PROVIDING LOWER RUNNING COSTS AND CARBON EMISSIONS”

**- DIRECTOR OF PLANNING - NEW PROJECTS**